



September 27, 2022

Mike Mayen, EI
IMEG
1817 South Ave, STE A
Missoula, Montana 59801

RE: Lower Meadows Subdivision
Stormwater
Mineral County
E.Q. #22-1970

Dear Mr. Mayen:

The storm drainage design and lot layout for the subject submittal were received by the Department on February 11, 2022. Additional information, including revised stormwater plans, were received by the Department on September 26, 2022. The stormwater plans were submitted under the seal of **Cory Davis, PE #39004**. The subject project was reviewed in accordance with Circular DEQ-8, 2017 Edition. The proposed stormwater design is hereby approved.

The project is in Mineral County, east of the Town of Alberton, generally located south of Adam Street and west of River Street. The project generally consists of roadside ditches, culverts and detention facilities as shown on the approved plans.

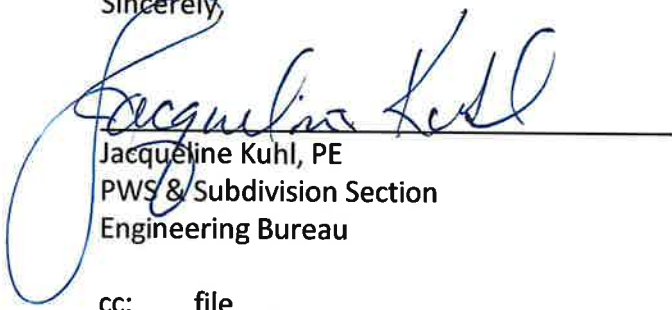
The project may not be placed into service until the project engineer or designer certifies by letter to the Department that the activated portion of the project was constructed in substantial accordance with the plans approved by the Department and there are no deviations from the design standards other than those previously approved by the department. Within 90 days after the completion of construction, a complete set of certified "as-built" drawings must be signed and submitted to the Department.

Construction of this project must be completed within three years of the approval date. If more than three years elapse before completing construction, plans and specifications must be resubmitted and approved before construction begins.

Additionally, if construction disturbance exceeds 1-acre, a construction stormwater permit will be required. Information can be obtained by contacting the Water Protection Bureau at 444-5310.

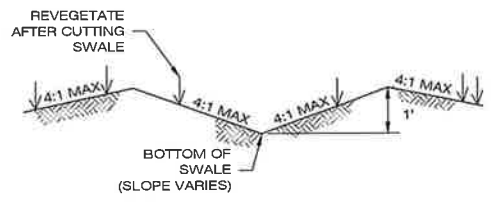
Thank you for your efforts to meet our requirements. If you have any questions on the above, please feel free to call me at the Water Quality Division at 444-1515 or email me at Jackie.Kuhl@mt.gov.

Sincerely,

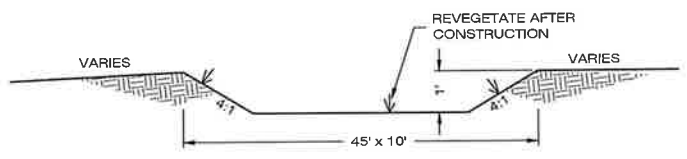
A handwritten signature in blue ink that reads "Jacqueline Kuhl". The signature is written in a cursive style and is positioned above a horizontal line.

Jacqueline Kuhl, PE
PWS & Subdivision Section
Engineering Bureau

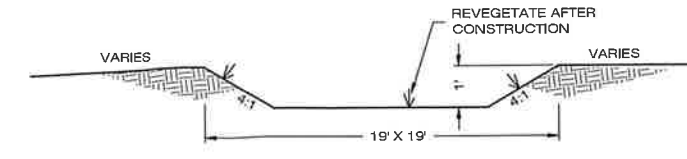
cc: file
Mineral County Sanitarian
Owner



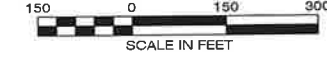
A TYPICAL SWALE DETAIL
NOT TO SCALE



B RETENTION POND
NOT TO SCALE



C RETENTION POND
NOT TO SCALE

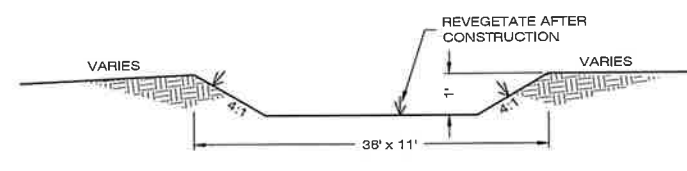
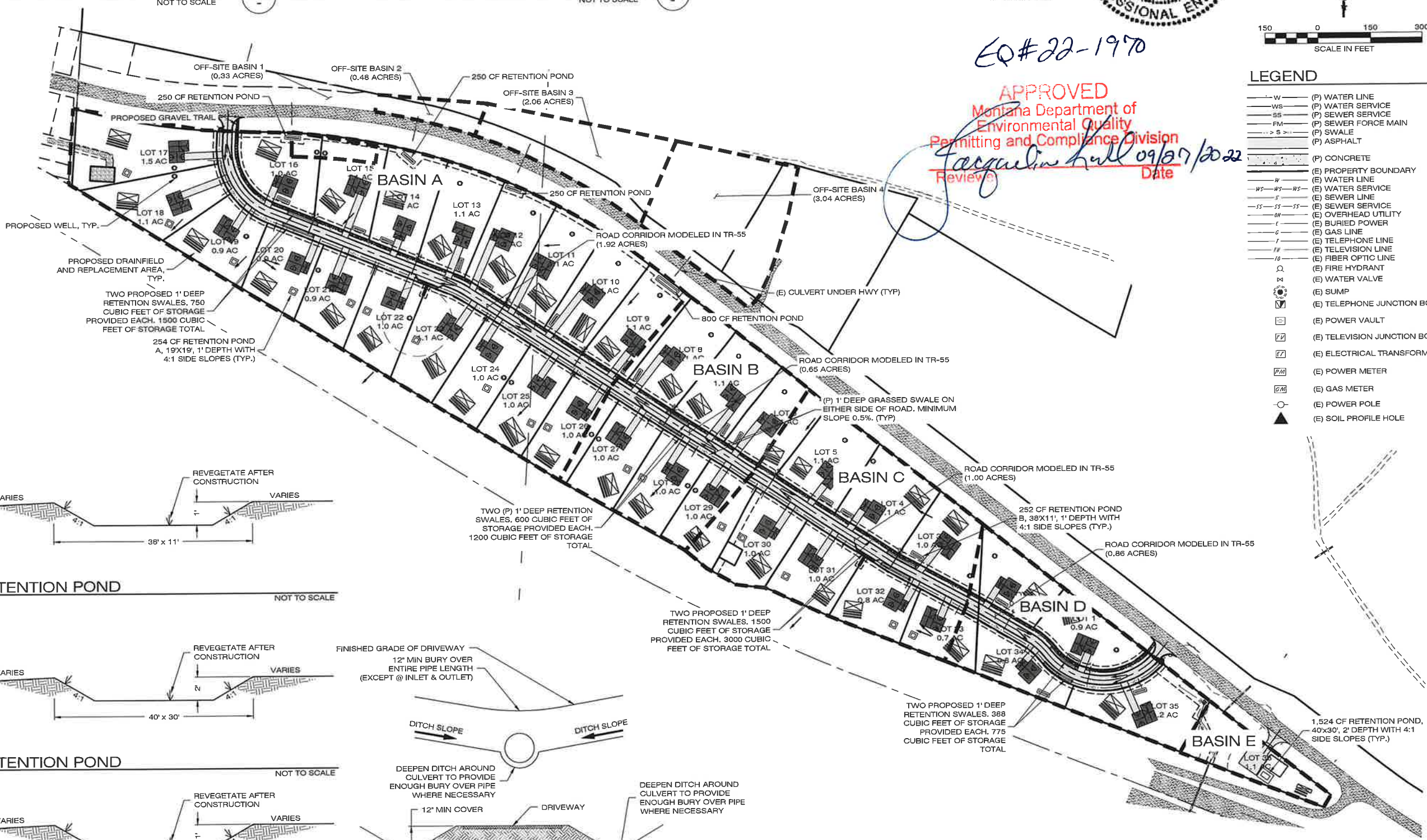


LEGEND

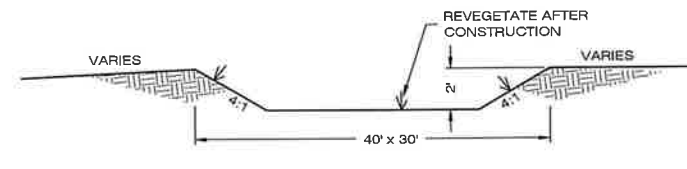
- (P) WATER LINE
- (P) WATER SERVICE
- (P) SEWER SERVICE
- (P) SEWER FORCE MAIN
- (P) SWALE
- (P) ASPHALT
- (P) CONCRETE
- (E) PROPERTY BOUNDARY
- (E) WATER LINE
- (E) WATER SERVICE
- (E) SEWER LINE
- (E) SEWER SERVICE
- (E) OVERHEAD UTILITY
- (E) BURIED POWER
- (E) GAS LINE
- (E) TELEPHONE LINE
- (E) TELEVISION LINE
- (E) FIBER OPTIC LINE
- (E) FIRE HYDRANT
- (E) WATER VALVE
- (E) SUMP
- (E) TELEPHONE JUNCTION BOX
- (E) POWER VAULT
- (E) TELEVISION JUNCTION BOX
- (E) ELECTRICAL TRANSFORMER
- (E) POWER METER
- (E) GAS METER
- (E) POWER POLE
- (E) SOIL PROFILE HOLE

EQ#22-1970

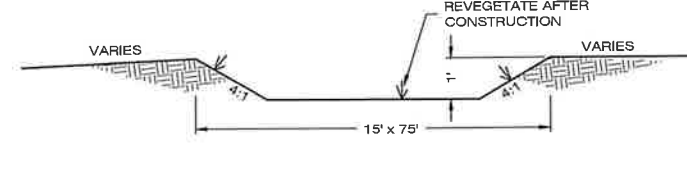
APPROVED
Montana Department of
Environmental Quality
Permitting and Compliance Division
Fargue Hull 09/07/2022
Date



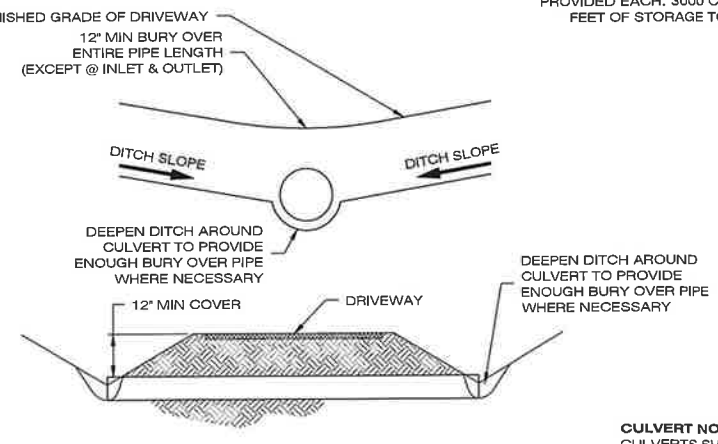
D RETENTION POND
NOT TO SCALE



E RETENTION POND
NOT TO SCALE



F RETENTION POND
NOT TO SCALE



CULVERT CROSSING
NOT TO SCALE

CULVERT NOTES:
CULVERTS SHALL BE INSTALLED FOR EACH RESIDENTIAL DRIVEWAY ACCESS, AS WELL AS THE TWO FIRE PULL OUTS. CULVERTS TO BE 12" DIA HDPE WITH A MINIMUM SLOPE OF 1%.

DATE	JUNE/2022
REVISIONS	INDEX RESUBMITAL
DESIGNED:	MM
DRAFTED:	MM
CHECKED:	CD
DATE:	JAN 2022

LOCATION: LOWER MEADOWS SUBDIVISION
SECTIONS 1 & 2
T14N, R23W, P.M.M.
MINERAL COUNTY, MT

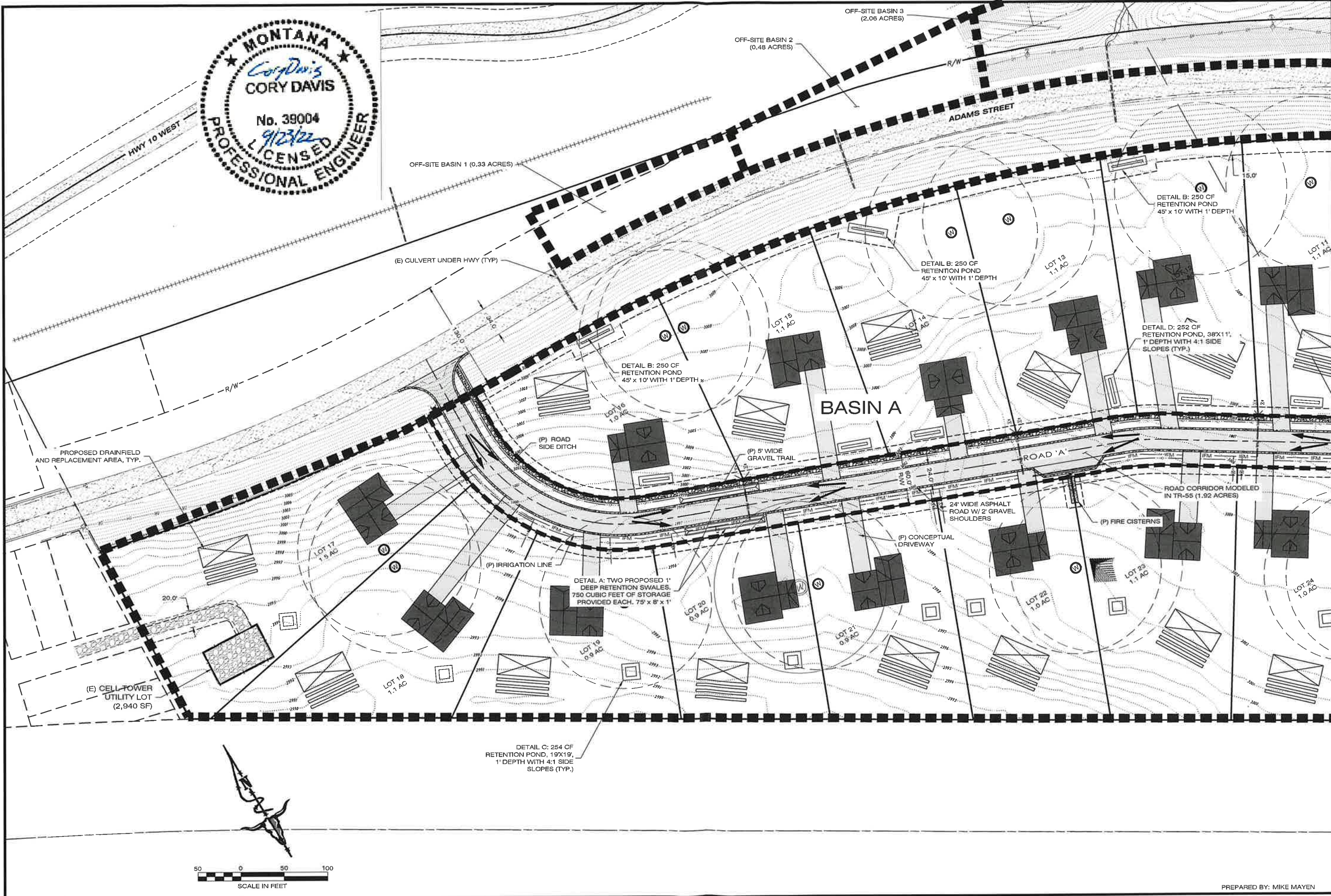
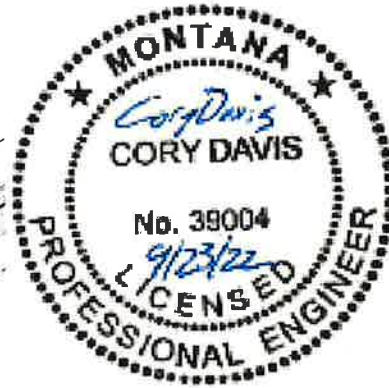
PREPARED FOR: TR DEV CORP

PROJECT NAME: LOWER MEADOWS SUBDIVISION

SHEET TITLE: OVERALL BASIN SHEET

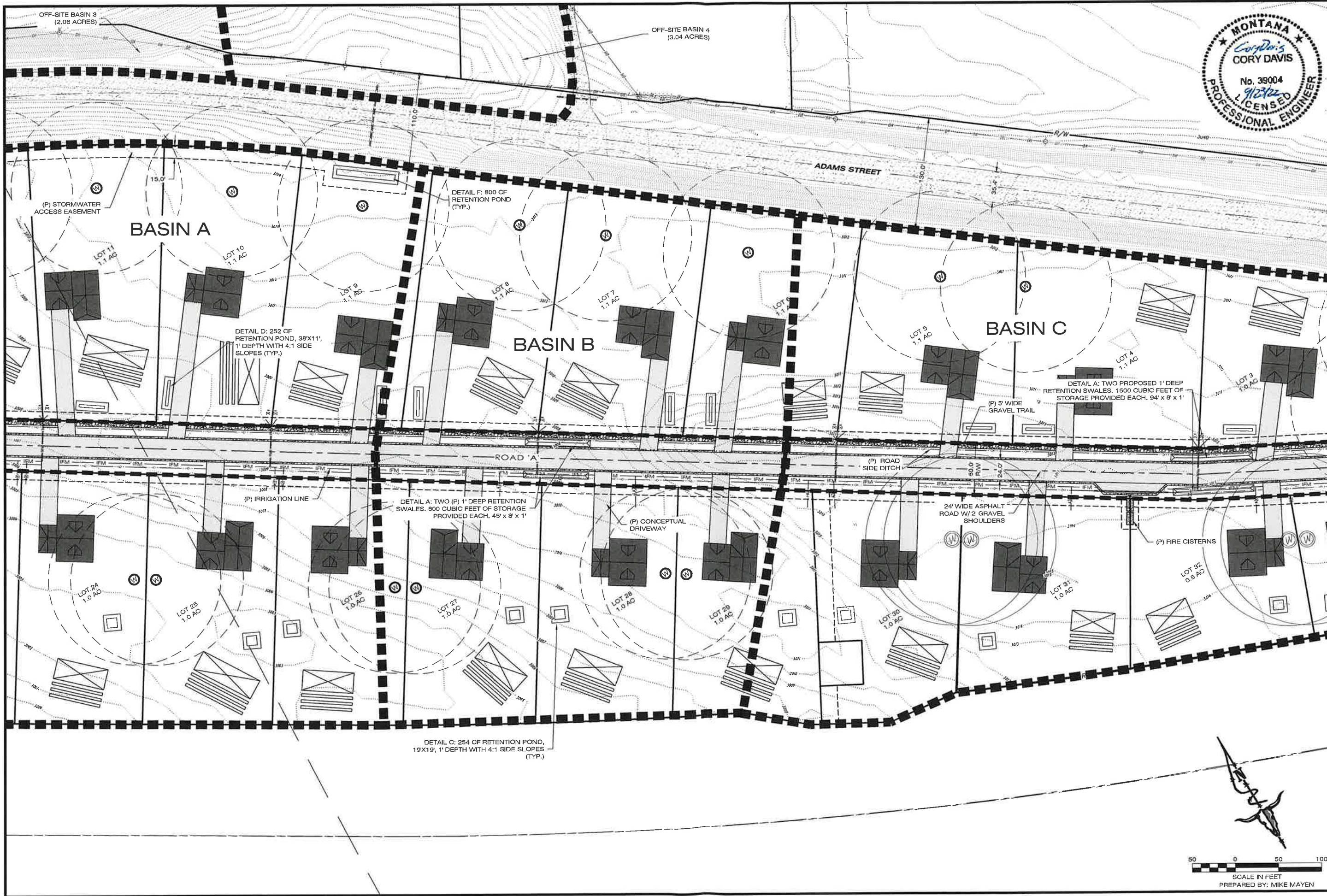
PROJECT NO.: 19-5307

SHEET: 1 OF 4



1817 SOUTH AVE. W. STE. A PH. 406.721.0142 MISSOULA, MT FAX. 406.721.5224 www.imegcorp.com 59601	
DATE: JUNE/2022 REVISIONS: MDEQ RESUBMITAL	DESIGNED: MM DRAFTED: MM CHECKED: CD DATE: JAN 2022
PROJECT NAME: LOWER MEADOWS SUBDIVISION SECTIONS 1 & 2 T1 4N, R23W, P.1.M.I. MINERAL COUNTY, MT	PREPARED FOR: TR DEV CORP
PROJECT NO.: 19-5307 SHEET: 2 OF 4	SHEET TITLE: BASIN A SHEET
PREPARED BY: MIKE MAYEN	

THIS DOCUMENT IS THE PROPERTY OF IMEG CORPORATION. IT IS TO BE USED ONLY FOR THE PROJECT AND LOCATION SPECIFICALLY IDENTIFIED HEREON. ANY REUSE OR REPRODUCTION OF THIS DOCUMENT WITHOUT THE WRITTEN PERMISSION OF IMEG CORPORATION IS STRICTLY PROHIBITED.



IMEG
1817 SOUTH AVE. W. STE. A
MISSOULA, MT 59801
PH: 406.721.0142
FAX: 406.721.8224
www.imegcorp.com

DATE	JUNE 2022
REVISIONS	IMDEG RESUBMITAL

DESIGNED: MM
DRAFTED: MM
CHECKED: CD
DATE: JAN 2022

LOCATION: LOWER MEADOWS SUBDIVISION
SECTIONS 1 & 2
T14N, R23W, P.M.M.
MINERAL COUNTY, MT

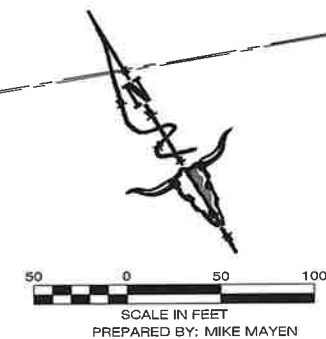
PREPARED FOR: TR DEV CORP

PROJECT NAME: LOWER MEADOWS SUBDIVISION

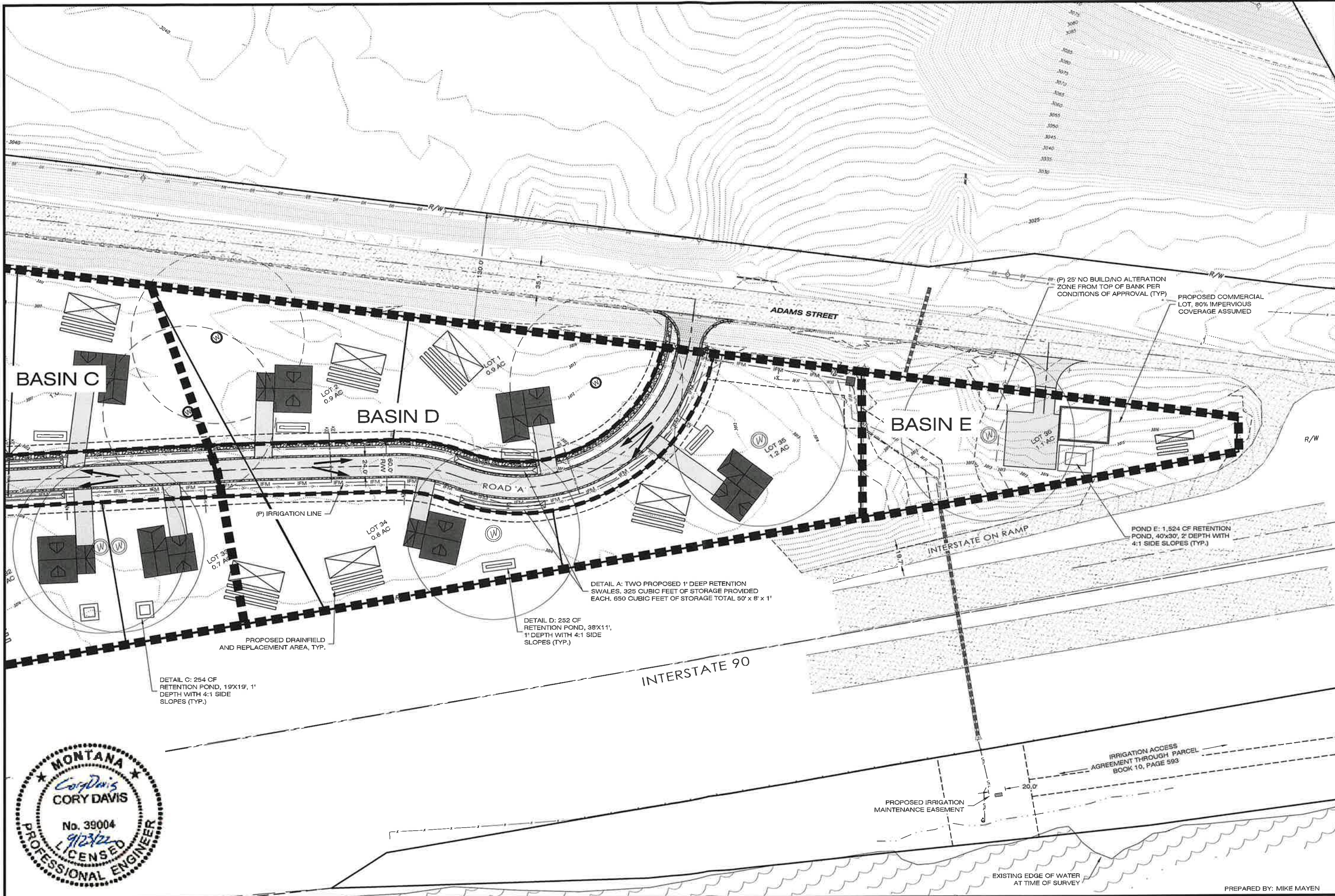
SHEET TITLE: BASIN A, B & C SHEET

PROJECT NO.: 19-5307

SHEET: 3 OF 4



DRAWN BY: M. MAYEN, DATE: 1/20/22, PROJECT: 19-5307, SHEET: 3 OF 4, FILE: 19-5307-03.dwg, PLOT DATE: 6/15/2022 8:52 AM



<p>1817 SOUTH AVE. W. STE. A MISSOULA, MT 59801 PH: 406.721.0142 FAX: 406.721.5224 www.imegcorp.com</p>	
DATE	JUNE/2022
REVISIONS	IMEG RESUBMITAL
DESIGNED:	MM
DRAFTED:	MM
CHECKED:	CD
DATE:	JAN 2022
LOCATION:	LOWER MEADOWS SUBDIVISION SECTIONS 1 & 2 T14N, R23W, P.M.M. MINERAL COUNTY, MT
PREPARED FOR:	TR DEV CORP
PROJECT NAME:	LOWER MEADOWS SUBDIVISION
PROJECT NO.:	19-5307
SHEET TITLE:	BASIN C, D & E
SHEET:	4 OF 4
PREPARED BY:	MIKE MAYEN

ILLUSTRATION: C:\PROJECTS\19-5307\19-5307-04.DWG
 DATE: 6/1/2022 10:00 AM
 PLOT DATE: 6/1/2022 10:00 AM

